

# Driver Installation Guide for MAC10.15 OS



Huawei Technologies Co., Ltd.

All rights reserved

Once the package is downloaded from Huawei support web-page, user will find below software's and documents in the downloaded zip file.

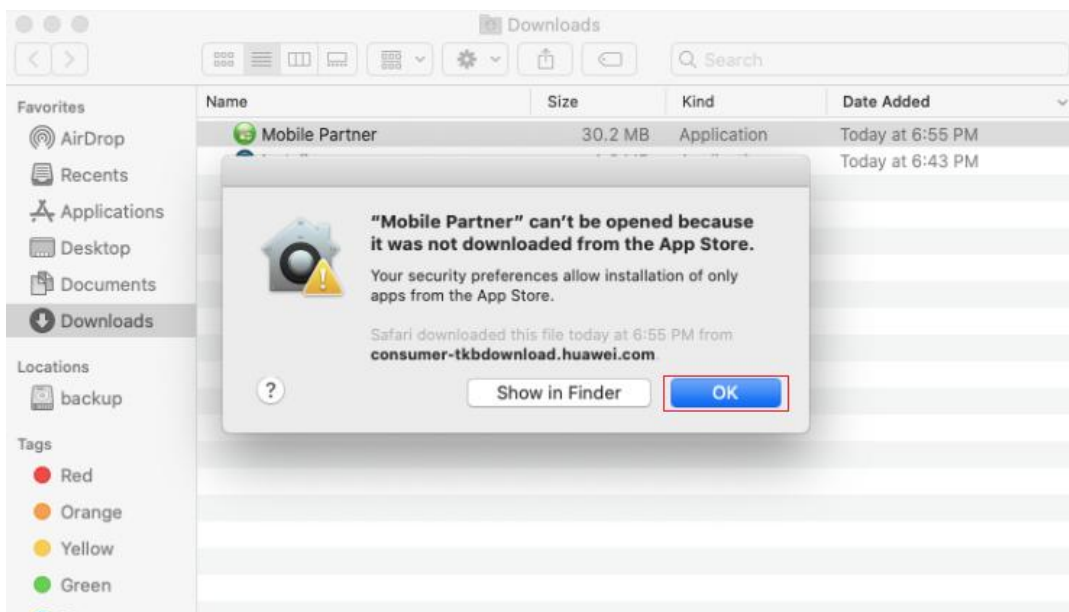
1. Mobile Partner.zip (This can be used to install dashboard software in MAC system)
2. [Update\\_MAC23.017.01.00.983.zip](#) – (This can be used to upgrade the software to device and install dashboard in MAC system)
3. Driver Installation Guide for MAC10.15 OS (Stick).doc (this document)

Here is the information on how to use these software to install Mobile Partner in the MAC OS.

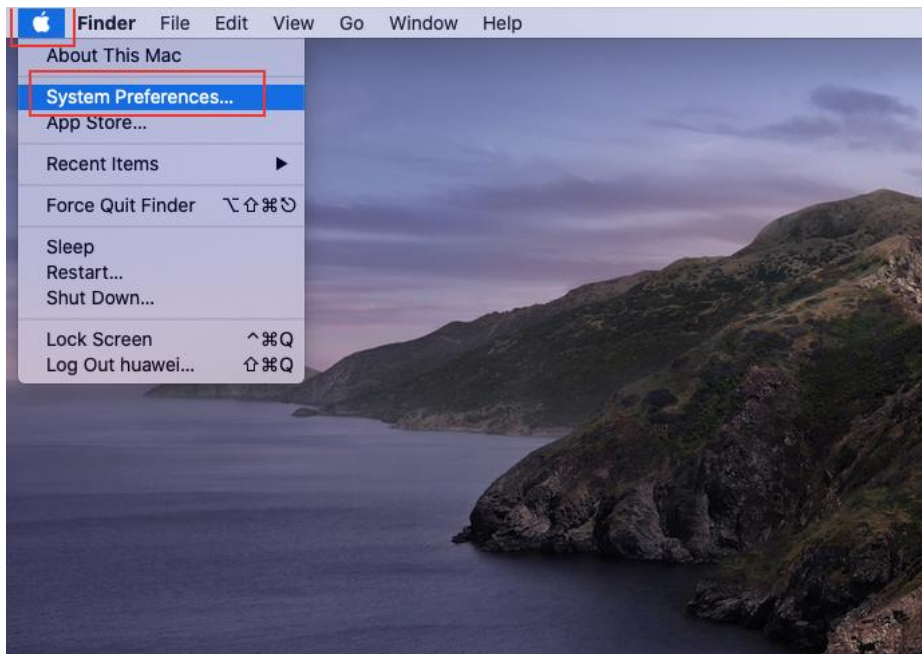
## 1.1 Install Procedure

### 1.1.1 Using Mobile Partner.app

- a. Download Mobile Partner.app to MAC, Double click on “Mobile Partner.app”



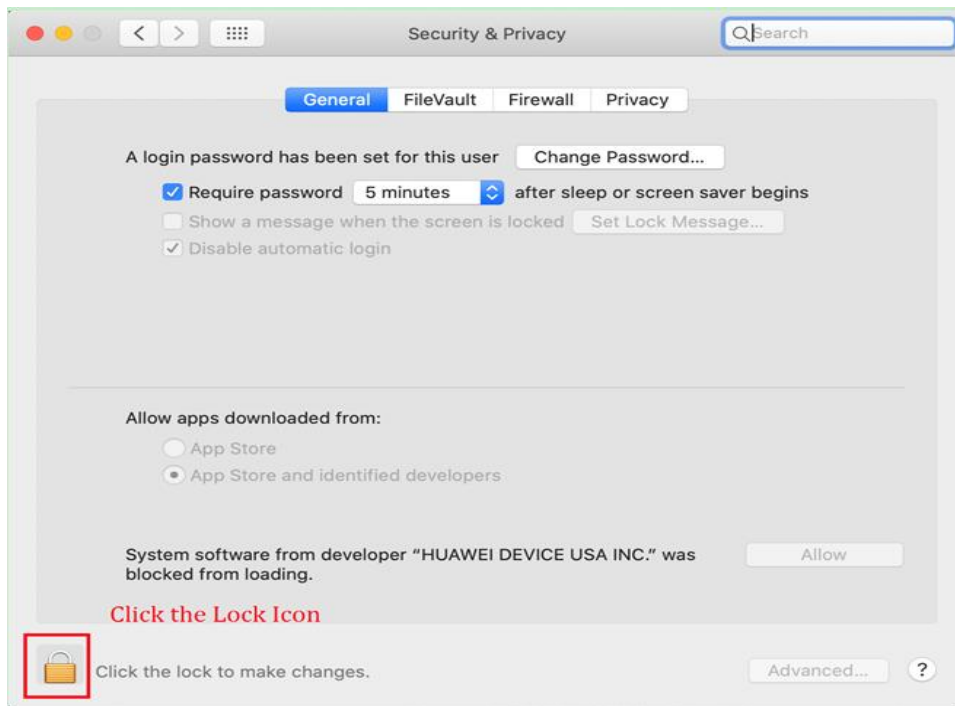
- b.



c.



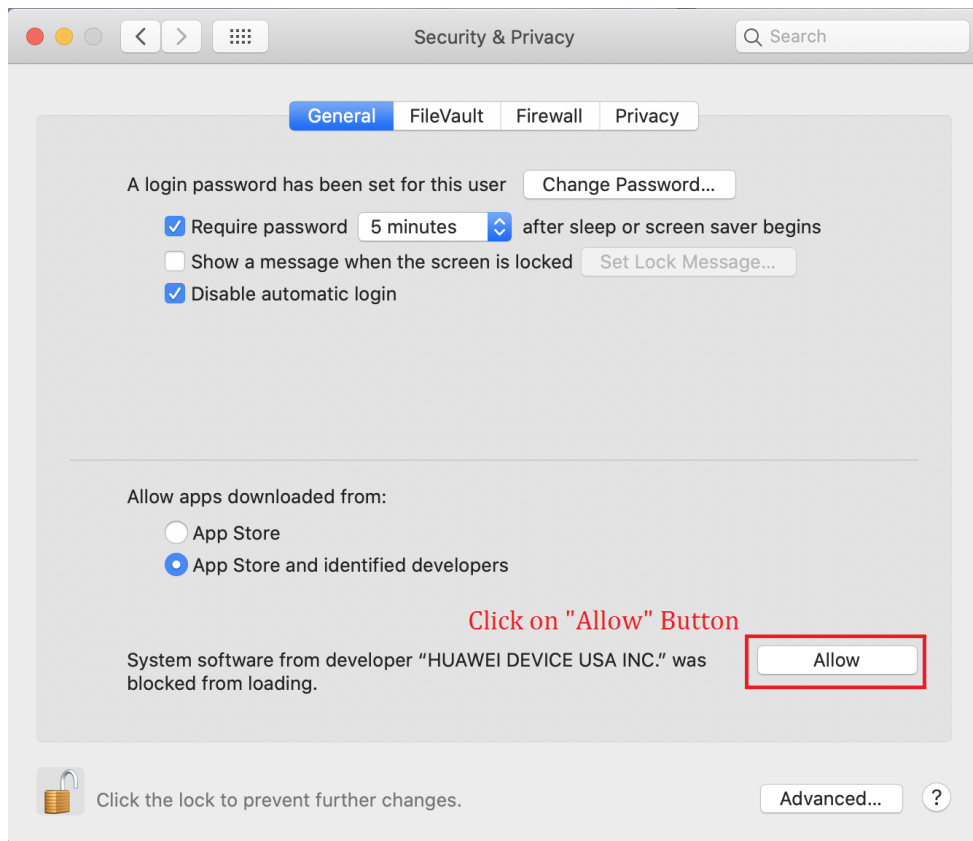
d.



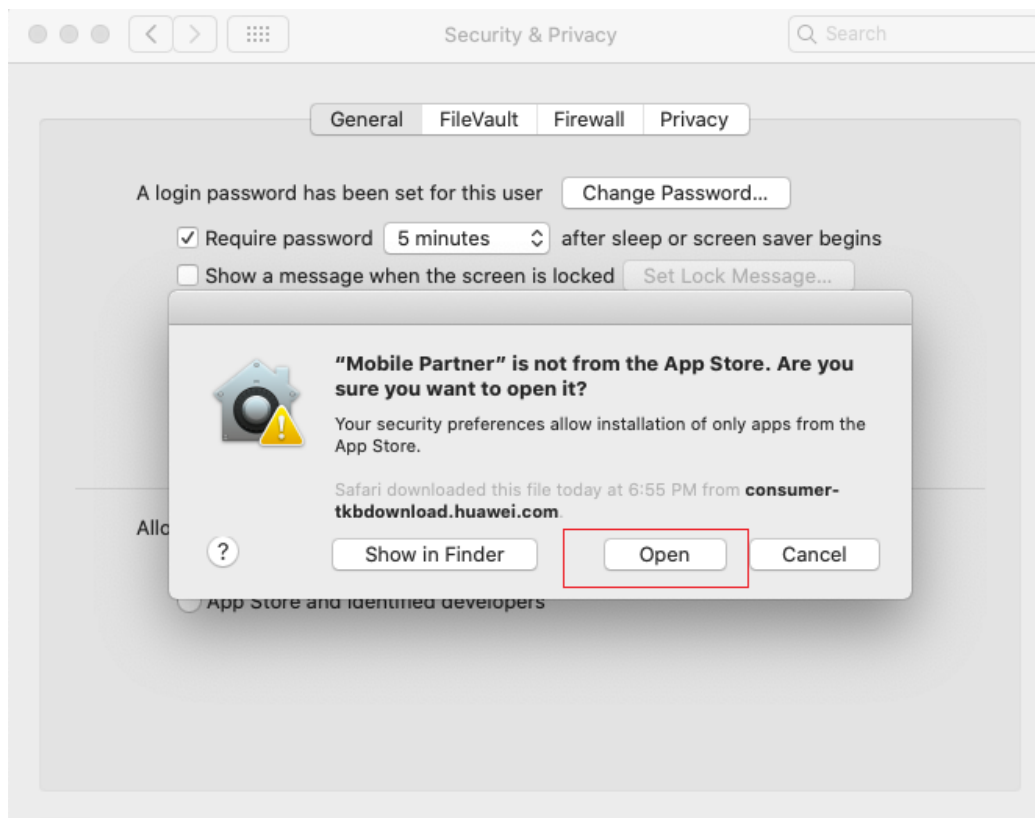
e.



f.

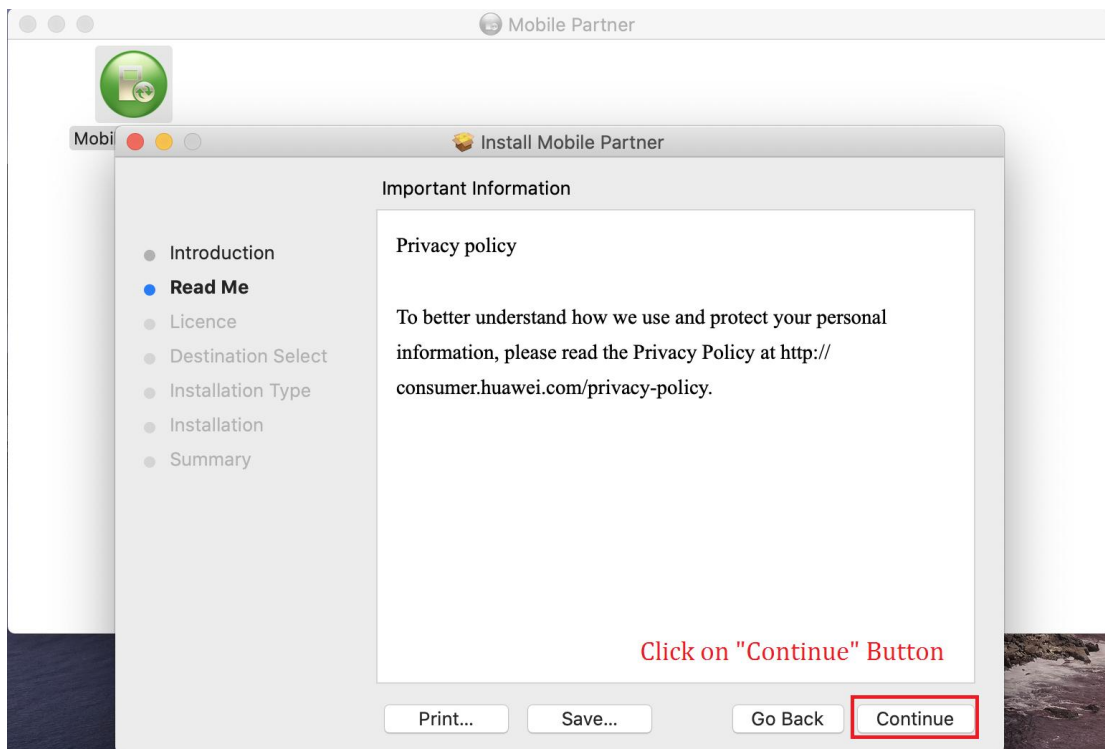
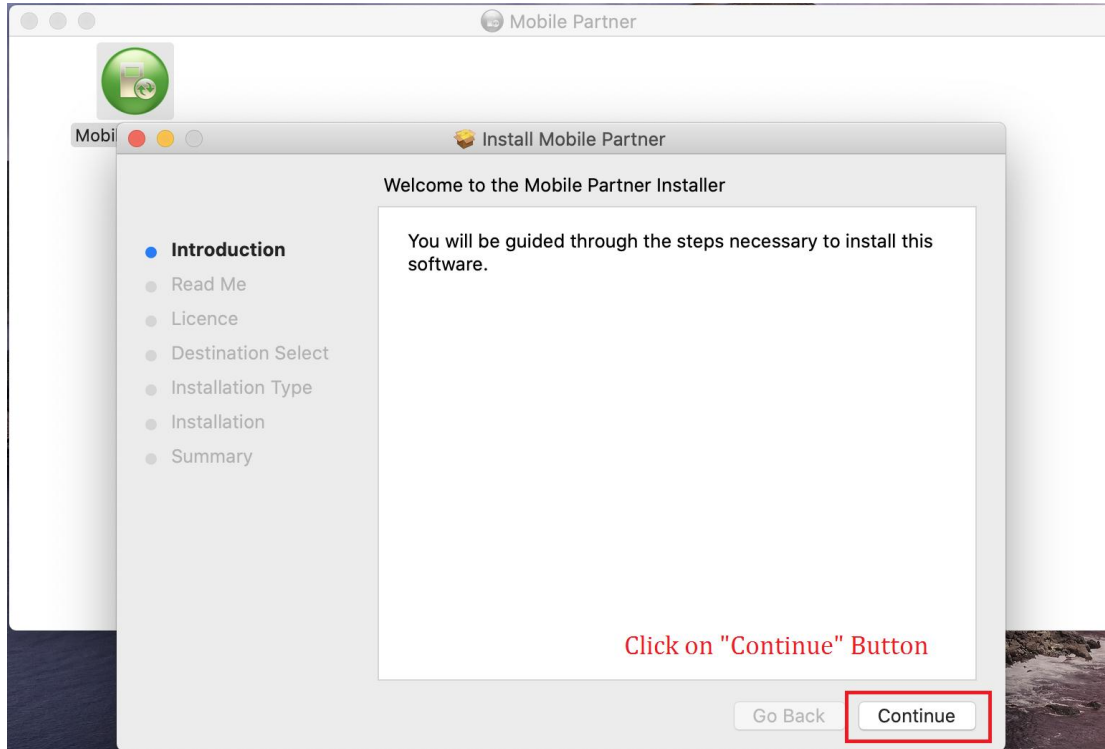


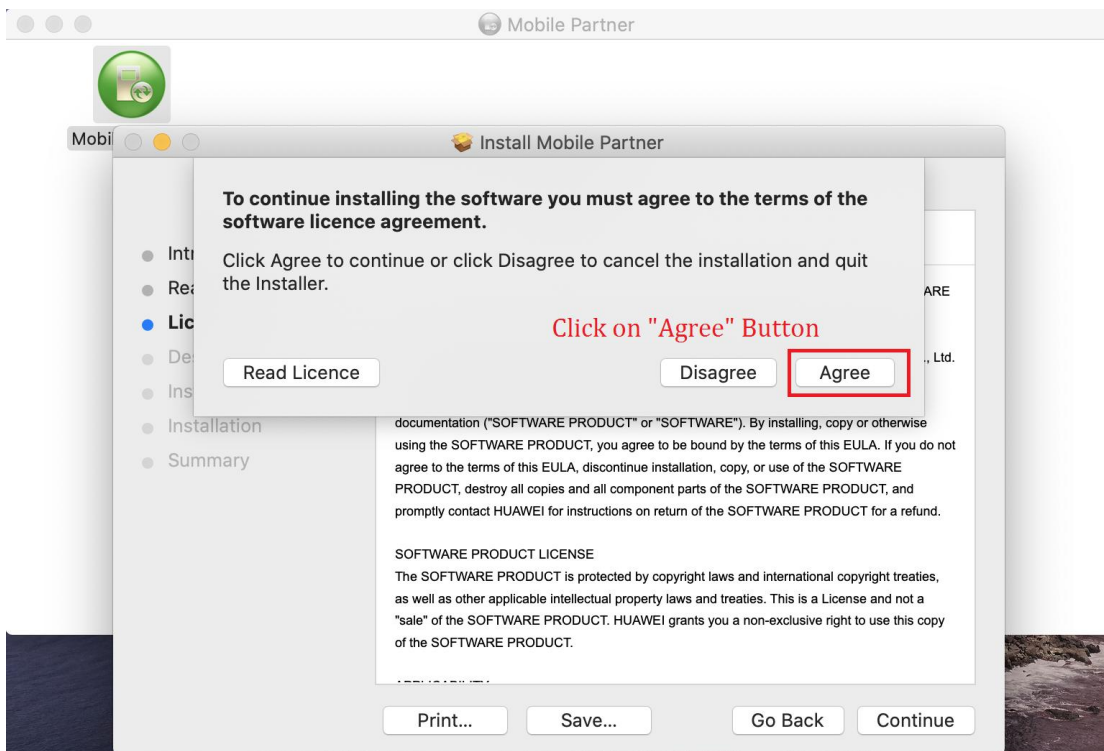
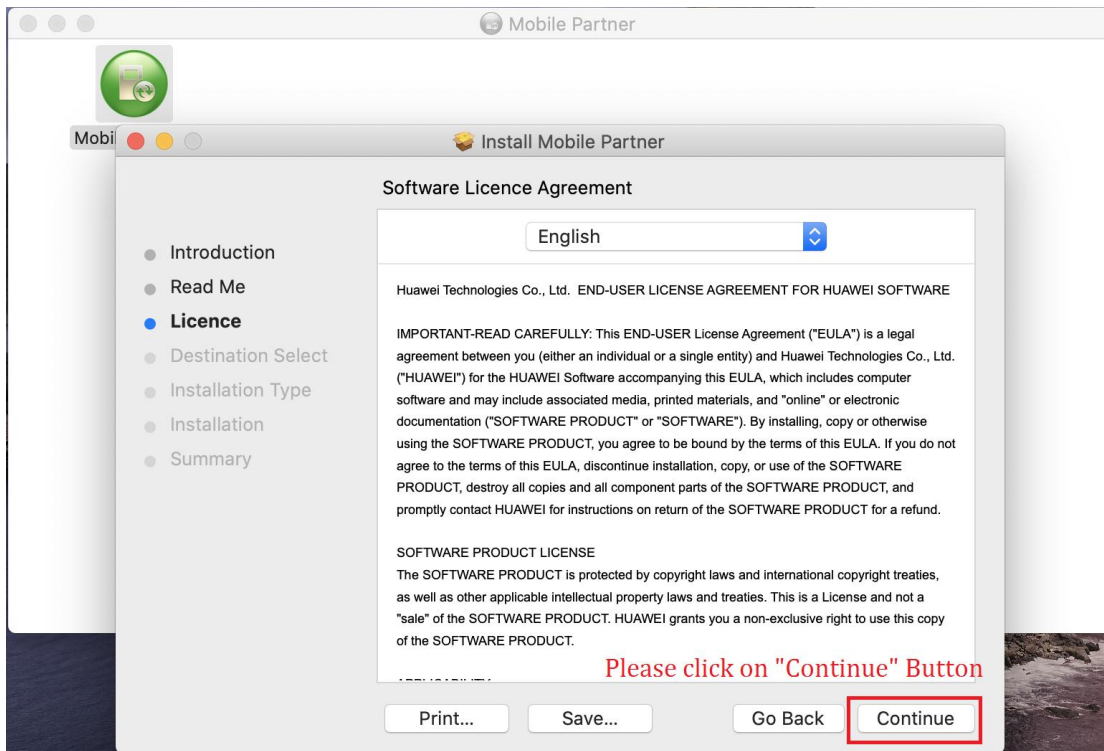
g. Re-open the following prompt box, Click "open" button



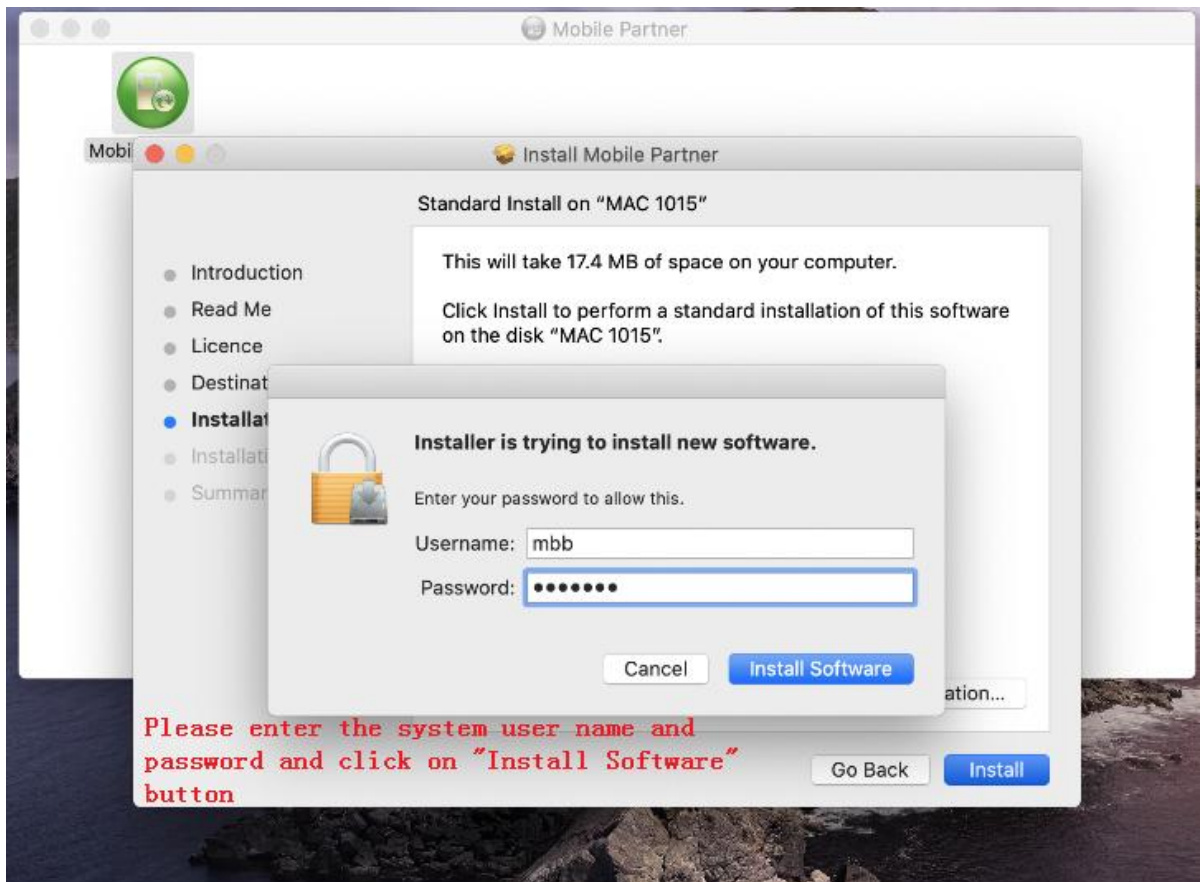
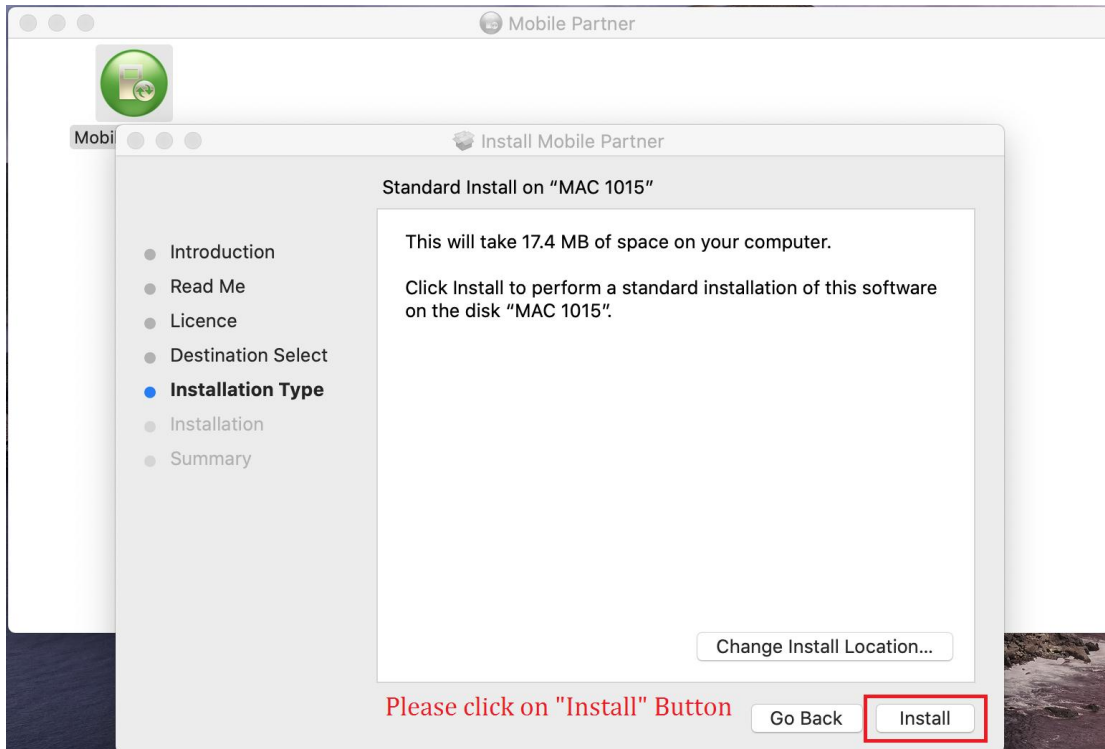
## 1.1.2 Installation steps

initiate the installation process.

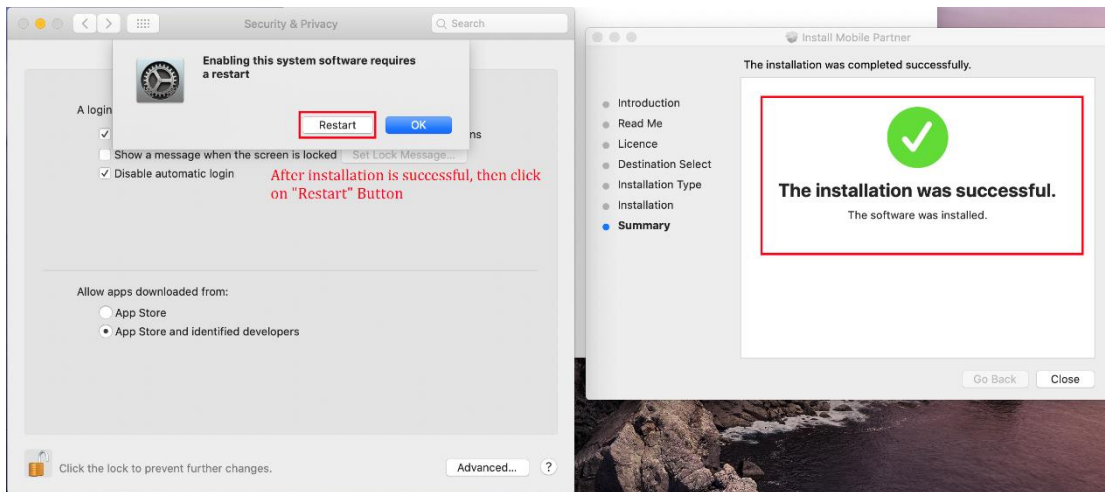




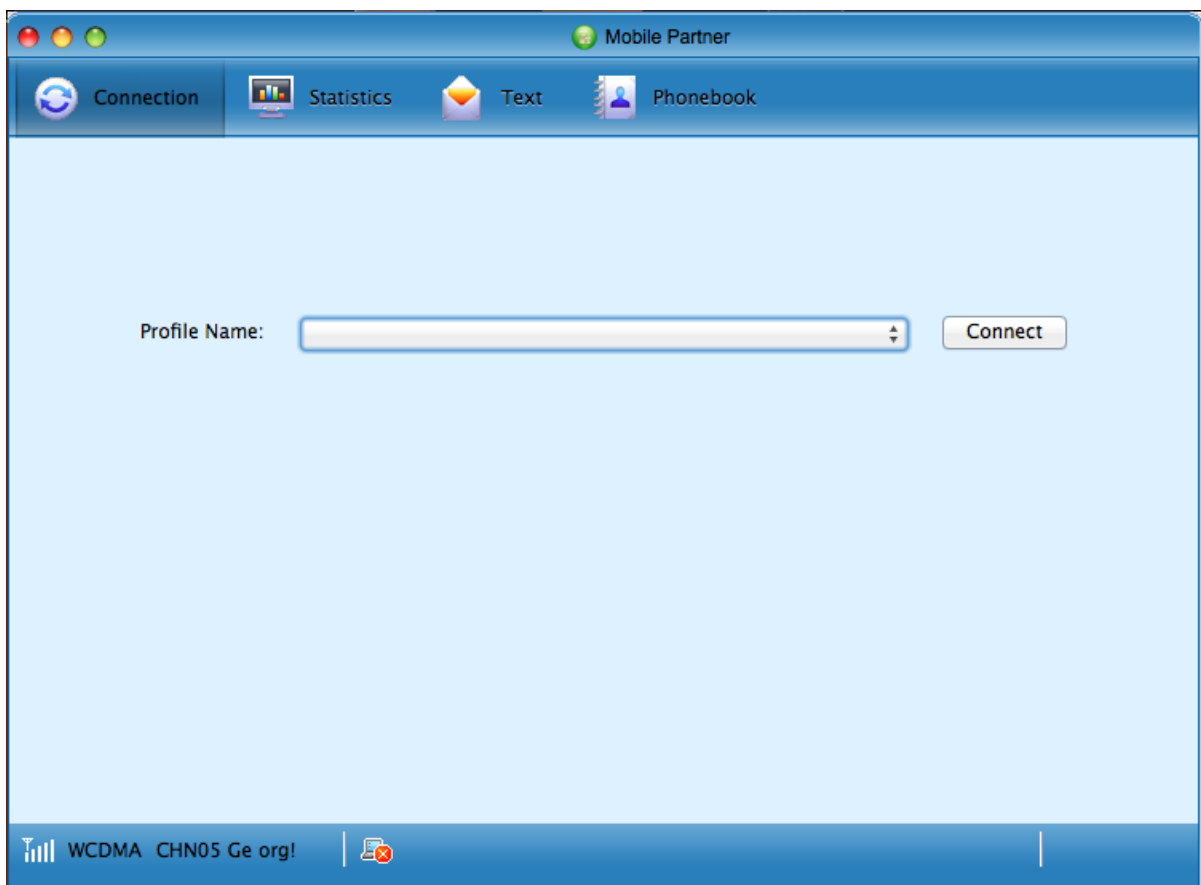




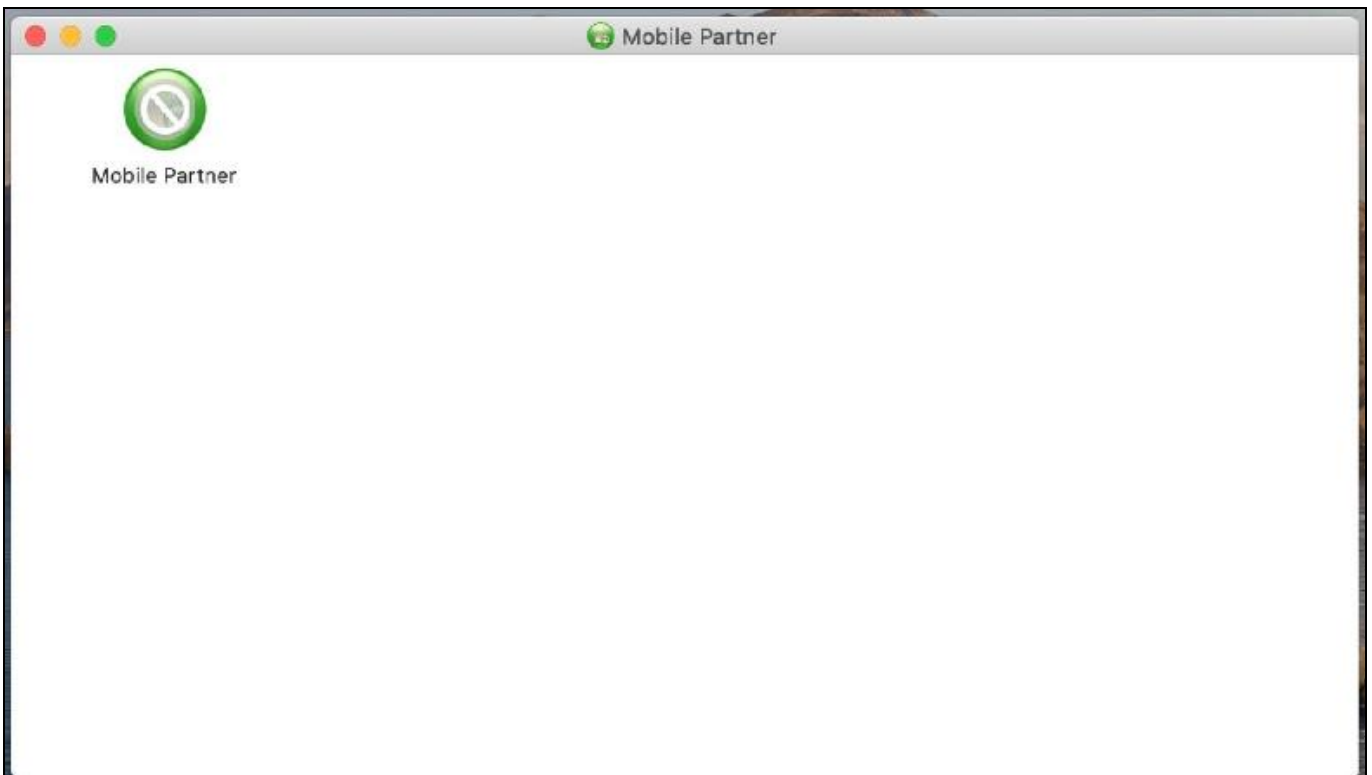




1.1.3 After installation finish the dashboard will start automatically.



Note : In case, if permission denied by user, then the automatic launch of Dashboard will not happen on device insertion.



Note : If this page is displayed,please close the dashboard,and then open the newly installed dashboard.

